

# 2014

## Licking County Health Department



**Public Health**  
Prevent. Promote. Protect.

# Mid-Year Report

### Our Mission:

---

PREVENT DISEASE, PROTECT THE ENVIRONMENT, AND PROMOTE HEALTHY LIFESTYLES IN THE LICKING COUNTY COMBINED GENERAL HEALTH DISTRICT.

### Our Vision:

---

HEALTHY PEOPLE IN HEALTHY COMMUNITIES

Licking County Health Department

675 Price Rd., Newark OH 43055

(740) 349-6535

[www.lickingcohealth.org](http://www.lickingcohealth.org)

R. Joseph Ebel R.S., M.S., M.B.A.

Health Commissioner

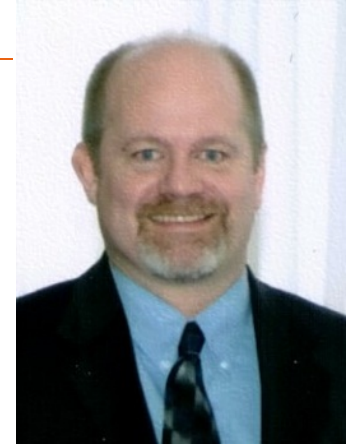


# Health Commissioner's Report

Joe Ebel, R.S., M.S., M.B.A.

## So far this year:

- Provided training classes for public swimming pool operators, food service workers, plumbers, and sewage treatment systems installers.
- Faced the challenges of Mumps and Measles outbreaks in our region. Cooperated with Knox County Health Department to provide Epidemiologist services.
- Completed a Public Health System Assessment to identify strengths and weaknesses.
- Received \$24,369 grant from the Licking County Foundation to support our school-based Dental Sealant program.
- Hosted an Accreditation Celebration event with representatives from state and local agencies, state, local and federal elected officials, as well as the general public in attendance.
- We have hired a Public Information Officer to coordinate our public outreach and communication efforts and to oversee volunteer recruitment and deployment.



## What's next?

We are continuing our strategic planning, quality improvement, and performance management system efforts. One of the outcomes from this process was taking a look at what we do, and what the major causes of illness and death are in our community. We then asked, what would help our citizens live long, healthy lives. Three major themes emerged:

- Tobacco-free living.
- Active living.
- Healthy eating.

Other areas of concern were traffic injuries and fatalities, infant mortality, excessive alcohol use, drug abuse, sexually transmitted diseases, and mental and emotional well-being.

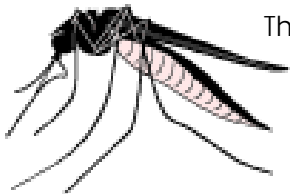
We will be using these as priorities when planning for new programs and when evaluating existing programs.



*Accreditation Celebration Photos!*



Mid-Year Environmental Health Statistics	First Half 2013			First Half 2014		
	Permits	Inspect	Consult	Permits	Inspect	Consult
Food Service Operations	535	742	327	559	859	216
Food Establishments	205	229	266	211	256	156
Mobile	75	144	48	118	154	3
Vending	122	45	2	120	25	4
Temporary Food Event	67	55	19	78	40	10
Manufactured Home Park	38	32	0	38	38	1
Campground	12	4	0	13	5	0
Day Camp	7	1	0	8	4	0
Pools and Spas	76	185	8	75	209	11
Bathing Beaches	1	2	0	1	1	0
Waste Facility	3	189	13	3	192	12
Schools	74	84	34	74	62	1
Tattoo/Body Piercing	12	10	3	9	8	12
New Sewage Installations	41	52	107	43	27	21
Sewage Alterations	38	62	10	33	23	7
Existing Sewage Systems		184	23		184	23
Semi-Public Sewage	319	322	1	290	359	2
Private Water Systems	96	84	100	90	82	10
Plumbing Residential	225	420	11	235	504	22
Plumbing Commercial	86	237	26	51	165	10
Water Samples Collected		195			172	
Nuisance Complaints	#	Inspections		#	Inspections	
Solid Waste	242	229		130	330	
Sewage	41	29		33	71	
Food	74	62		60	57	
Smoking	16	13		8	8	
Other	13	7		12	12	
Total	386	340		243	478	
Rabies / Animal Bites						
Dog	111			133		
Cat	50			43		
Raccoon	1			1		
Other	6			10		



The unusually wet weather brought high numbers of mosquitoes which are capable of carrying disease. Our vector control staff have been busy treating standing water to control mosquito breeding sites, and spraying to reduce adult mosquito populations when needed.

# Public Health Nursing and Child and Family Health Services

Nursing and CFHS Programs	2013 Mid	2013	2014 Mid
<b>Clients Attending Clinics</b>	2,520	6,721	2,669
<b>Immunization (# of Children)</b>	1,185	2,890	1,371
<b>International Travel Vaccine Clients</b>	215	418	331
<b>Adult Vaccines (various)</b>	655	761	585
<b>Adult Flu Vaccines</b>	208	2,124	112
<b>STD/Sexual Health Clinic visits</b>	257	528	270
<b>Women's Health Clinic</b>	44	88	56
<b>Total Doses of Vaccine Administered</b>	3,726	5,303	3,690
<b>Children</b>	2,768	4,412	2,078
<b>Adult</b>	958	891	1,612
<b>TB Tests</b>	356	781	289
<b>HIV Tests</b>	201	417	221
<b>Dental Sealants Applied</b>	777	1,334	
<b>At-Risk Pregnancy Consultations</b>	<b>1,038</b>	<b>1,947</b>	<b>921</b>
<b>Early Head Start Home Visits</b>	1,174	2,234	1,057
<b>Breast and Cervical Cancer Participants</b>	<b>526</b>	<b>1,066</b>	<b>514</b>

## Travel Vaccination Clinic

Country information, health precautions, official health data and travel warnings.

Immunizations for various diseases based on the prevalence of disease in specific countries.



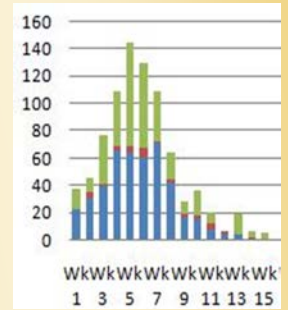
Licking County's Women, Infant, and Children's Supplemental Nutrition Program (WIC) provides nutrition education and screening, supplemental foods, and referrals for women (pregnant, postpartum, and breastfeeding), infants and children less than 5 years old.

WIC Clinic Caseload: Newark, Price Rd. office - 2580, Johnstown - 189, Buckeye Lake - 133, and Pataskala - 481.

Our "Partners in Breastfeeding" support group meets every month on the 4th Thursday at 10:30am. In addition, a Breastfeeding Class is offered every other month, on the 2<sup>nd</sup> Thursday at 2pm. Both are open to the entire community to increase awareness of breastfeeding and provide a source of answers, support and encouragement for breastfeeding moms.

Communicable Disease Report: January - June	2013 MidYear	2014 MidYear
Amebiasis	0	0
Botulism, infant	0	0
Brucellosis	0	1
Campylobacteriosis	26	12
Chlamydia	249	272
Coccidioidomycosis	0	0
Creutzfeldt-Jakob Disease	0	0
Cryptosporidiosis	1	1
E. coli - enterohemorrhagic (shiga toxin producing) - Not O157:H7	6	1
E. coli - enterohemorrhagic (shiga toxin producing) O157:H7	0	1
E. coli - enterohemorrhagic (shiga toxin producing) Unknown serotype	1	0
Giardiasis	2	1
Gonorrhea	51	60
Haemophilus influenzae (invasive disease)	0	0
Hemolytic uremic syndrome (HUS)	0	0
Hepatitis A	0	0
Hepatitis B (including delta) - acute	1	2
Hepatitis B (including delta) - chronic	4	5
Hepatitis C - acute	1	0
Hepatitis C - chronic	66	65
Influenza-Hospitalized	16	45
Influenza-Seasonal	771	720
LaCrosse virus disease (other California serogroup virus disease)	0	0
Legionellosis - Legionnaires' Disease	3	2
Leptospirosis	0	0
Listeriosis	0	2
Lyme Disease	2	2
Meningitis - aseptic/viral	1	1
Meningitis - bacterial (Not N. meningitidis)	0	0
Meningococcal disease - Neisseria meningitidis	0	0
Mumps	0	12
Pertussis	51	30
Rabies - animal	0	0
Rocky Mountain spotted fever (RMSF)	0	0
Salmonellosis	9	8
Shigellosis	7	0
St. Louis encephalitis virus disease	0	0
Streptococcal - Group A -invasive	2	1
Streptococcal - Group B - in newborn	0	0
Streptococcal toxic shock syndrome (STSS)	0	0
Streptococcus pneumoniae - invasive antibiotic resistance unknown	6	6
Varicella	7	5
West Nile virus disease (also current infection)	0	0

## Epidemiology



The Epidemiologist tracks disease rates and trends to help reduce infection rates.

Our EPI team was busy this spring investigating over 100 gastro-intestinal disease cases linked to three outbreaks. One outbreak was confirmed by laboratory testing for Norovirus. Norovirus causes symptoms that usually include diarrhea, throwing up, nausea, and stomach cramping.

Norovirus can spread quickly through contaminated food and from person to person in crowded, closed places like long-term care facilities, daycare centers, schools, hotels and cruise ships.

# Emergency Preparedness

- Participated in Local Integrated Healthcare Disaster Planning meetings.
- Continued improvement on monitoring infectious disease rates.
- Created a Volunteer Steering Committee consisting of Medical Reserve Corps, Red Cross, and Community Emergency Response Team volunteers.
- Expanded membership in the Licking County Medical Reserve Corps (MRC).
- Conducted a MRC Volunteer Notification Drill.
- Participated in a Foodborne Disease Outbreak Exercise.
- Exercised afterhours phone system for reporting infectious diseases and epidemiological team notification.
- Increased the number of Closed Points of Dispensing (POD) in Licking County.
- Responded to two Norovirus outbreaks and one Shigella/Norovirus outbreak.



# Health Promotion and Education

- Provided free car seats to 46 low income families and 35 installation checks.
- The LCHD led Licking County Wellness Coalition program held the 5th annual Change Gears bike event and distributed 47 bike helmets, 79 reflective bands, 20 bike bells, and 52 water bottles to the 89 participants.
- Hosted "Spring into Pink" with guest speaker Maddie Spielman, daughter of Chris and Stefanie Spielman and spokesperson for the Stefanie Spielman Fund.
- 1,800 3rd grade children received comprehensive health and wellness lessons.
- Traffic safety initiatives included Motorcycle Safety, Super Bowl Impaired Driving Prevention, and a Click it or Ticket Kick-off event featuring a Licking County family affected by unsafe driving. Additionally, St. Patrick's Day and Prom/Graduation campaigns ran, and we attended a Lifesavers conference in April. We distributed two Safe Communities Newsletters and five news releases.
- Participated in "Our Futures in Licking County" campaign activities and committees. Conducted 97 alcohol sale to minors compliance checks in 2013. Conducted 18 tobacco sale to minors compliance checks in 2014 to date.
- Attended health fairs, parades, and events throughout the county.
- Distributed 6 Wellness Newsletters to 1300 subscribers.
- Held 4th Worksite Wellness Workshop with 20 attendees.
- Tobacco Prevention: Trained 11 LCHD nurses in 5A's and 2A's + R cessation counseling. Advertised Ohio Tobacco Quitline with 34 radio spots for Kick Butts Day (recorded by Youth Leadership Council Students). Met with one multi-unit housing manager (manages two complexes) and gathered 30 smoke-free home pledges. Recruited 22 middle school students for STAND.



## Early Head Start

This program is designed to help low income families and teen moms raise children who are prepared to excel when they enter school. Families receive parenting education and the children are assessed to identify any developmental delays early. Entering school ready to learn is a key factor in increasing graduation rates.

## BCCP and SASS for Breast Cancer Programs



The Breast and Cervical Cancer Project (BCCP) and Screening and Survivor Support (SASS) programs help to reduce the loss of life from breast and cervical cancer in Licking County. Early detection leads to improved survival rates. To increase screening rates, income and age qualifying women can receive free pap tests and mammograms

through these programs. Donations to support our breast cancer program are used to pay for mammograms and to promote breast cancer awareness and education. Donations may be made to the Public Health Partnership of Licking County, [www.phplc.org](http://www.phplc.org). Free mammograms were provided to 66 women through the SASS breast cancer program. Of those 66 women, 5 received diagnostic follow-up testing. Additionally, 129 women have been seen in Licking County through the BCCP. This makes up 21 percent of the total women who have participated in the BCCP regionally.

## Sexually Transmitted Disease Reduction Initiative

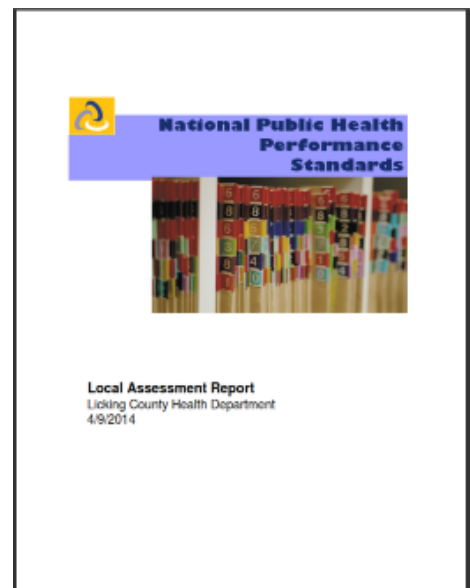


LCHD is working to reduce STD rates through education, screening, and treatment. The only way to determine if one has an STD is to be checked by a health care provider. The Licking County Health Department offers a free, confidential STD clinic each Tuesday by appointment only. Appointments can be made by calling (740) 349-6535. For more information, please visit: [www.lickingcohealth.org](http://www.lickingcohealth.org) or visit: [www.cdc.gov/std](http://www.cdc.gov/std).

## Local Public Health System Assessment:

On February 6, 2014, the Licking County Community Health Improvement Committee (CHIC) began a Local Public Health System Assessment, and on April 9, 2014, our staff completed the assessment. The assessment was conducted as part of the Mobilizing for Action through Planning and Partnerships (MAPP) process, which is used by CHIC members to improve the health of our community. The goal of the assessment was to evaluate the public health system in the county as a whole and determine how agencies in the county can work together to meet the public health needs of county residents. The complete assessment report is available on our website.

The CHIC will continue to work together, and use the information collected from the assessment to implement and evaluate our Community Health Improvement Plan.



Visit us on-line at [www.lickingcohealth.org](http://www.lickingcohealth.org)

OR FIND US ON FACEBOOK AT [WWW.FACEBOOK.COM/LCHEALTH](http://WWW.FACEBOOK.COM/LCHEALTH)  
AND ON TWITTER USING @LICKINGHEALTH



Licking Co. Health Dept.  
675 Price Rd.  
Newark, OH 43055